

# **Doppelgaengers**

**for erhu and piano**

**David M. Gordon**

# Doppelgaengers

*for Hsiao Chih-I and Wang Jui-Ching*

Duration: ca. 6:00

## Erhu Performance Notes

- Your open strings must be tuned to D4 and A4.
- The double stops featured throughout the piece must be played with only the hair of the bow touching the strings, which will require you to either rotate your wrist or push the bow hair downward to cover a greater area.
- In mm. 29–36, 46–55, and 63–73, you’re instructed to “embellish the melody in a relatively traditional way.” During those sections, you should imagine that what you’re playing is a folk tune or conventional erhu composition (even though, of course, it isn’t) and add a significant amount of ornamentation to the notated melody. You’re encouraged to make liberal use of grace-note figures, *Hua Yin* (滑音), *Hui Hua Yin* (迴滑音), *Da Yin* (打音), and various other common embellishment techniques. All three sections are pentatonic. The first (mm. 29–36) uses only the notes E-G-A-B-D, while the second and third (mm. 46–55 and 63–73, respectively) use only the notes D-F-G-A-C.
- Special notations:



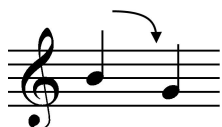
Lower the indicated pitch by a quarter tone. Precise tuning is essential.



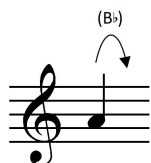
Intense *Ya Xian* (压弦).



*Shang Hua Yin* (上滑音). Begin the slide roughly halfway between the beginnings of the two notated pitches.



*Xia Hua Yin* (下滑音). Begin the slide roughly halfway between the beginnings of the two notated pitches.



Upward *Hui Hua Yin* (迴滑音). The parenthetical note name indicates which pitch you should slide up to.